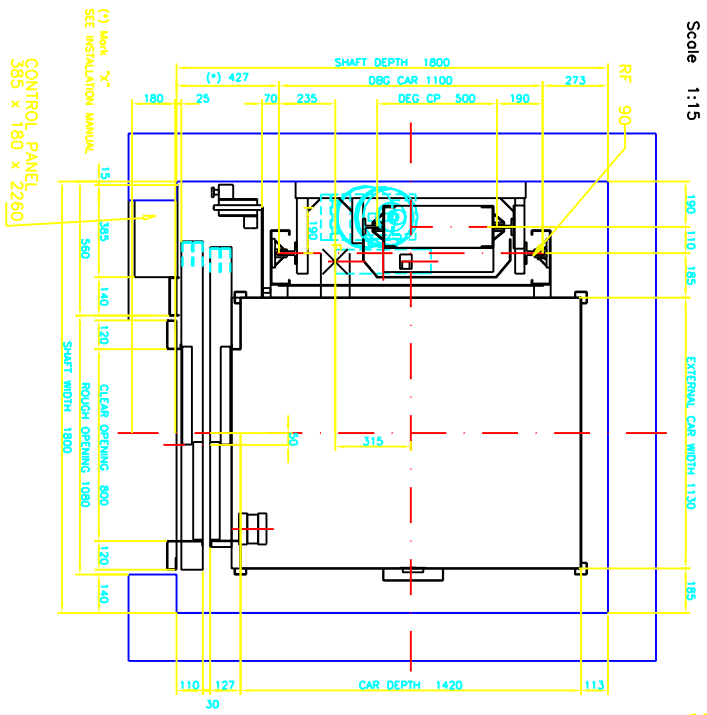
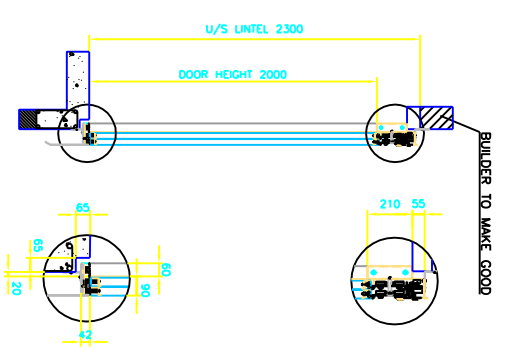


**PLAN VIEW**  
Scale 1:15

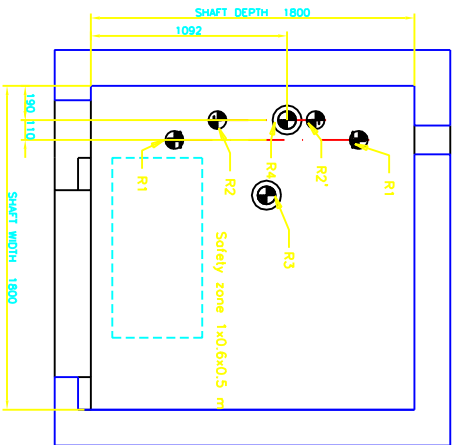


WORK SPACE ON THE CAR ROOF: 0.5 m WITH A 0.5 m OPENING WITH STOPPED CAR AND FIXED MECHANICALLY WORK SPACE IN FRONT TO THE CONTROL PANEL: 0.5 m WITH A 0.7 m DEPTH MINIMUM OPENING OF 80° FOR THE DOORS OF CONTROL PANEL.

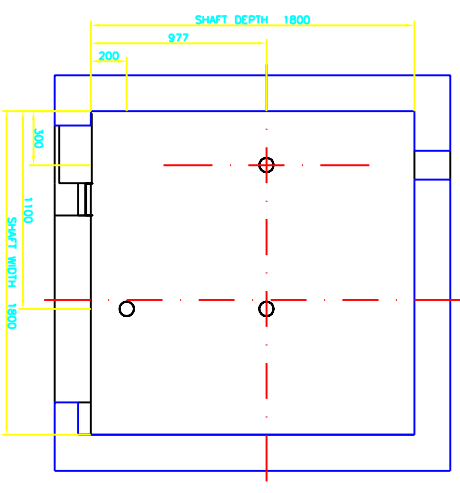
**DOOR DETAIL**  
Scale 1:25



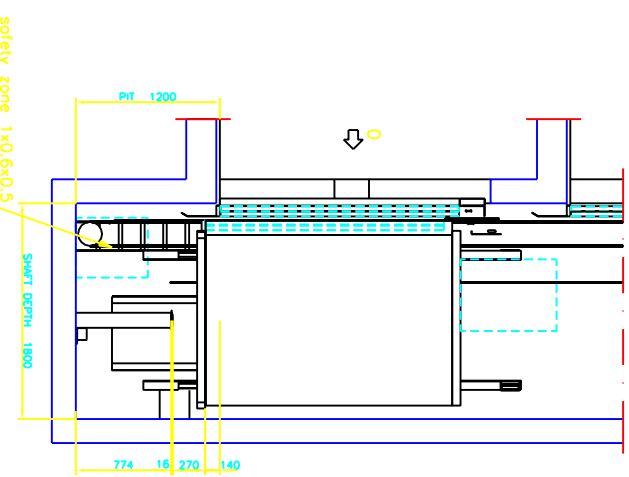
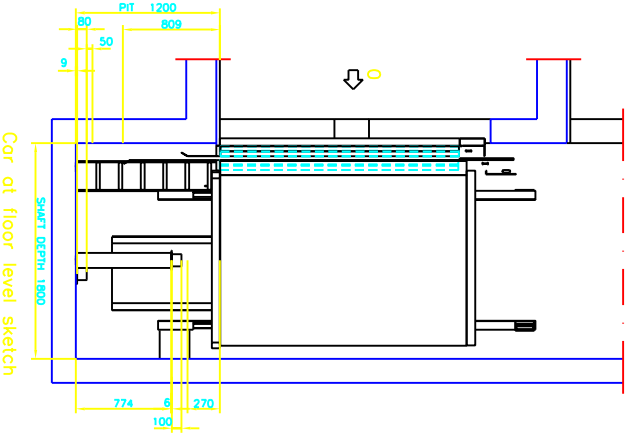
**PIT LAYOUT**  
Scale 1:20



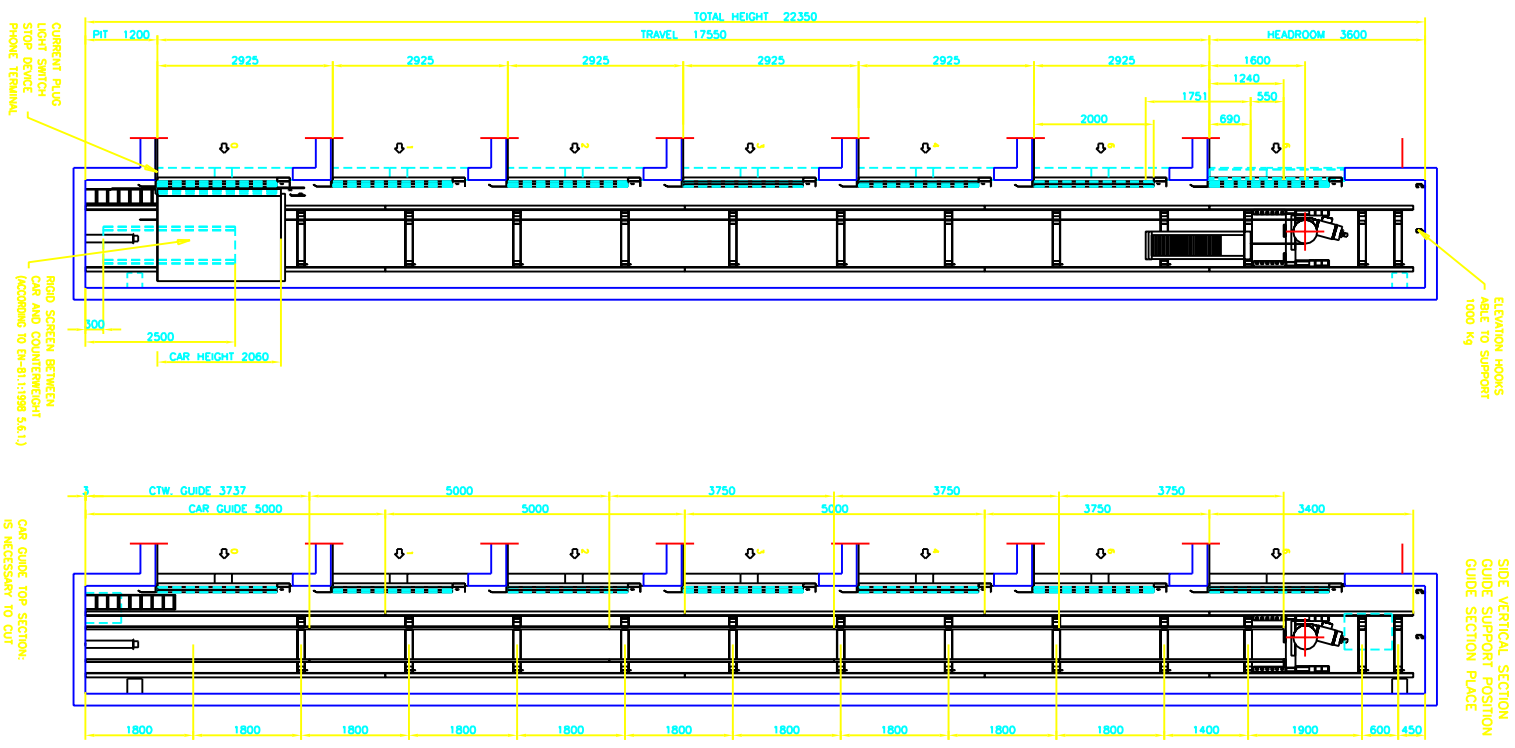
**ELEVATION HOOKS**  
Scale 1:20



**PIT DETAIL**  
Scale: 1:30



**ELEVATION**  
Scale 1:60



REINFORCED AND WATERPROOF PIT WITH LADDER (ACCORDING TO EN -811:1998 5.7.3.2.2)  
CURRENT PLUG WITH SWITCH AND PHONE TERMINAL  
ROD SPACERS BETWEEN CAR AND COUNTERWEIGHT (ACCORDING TO EN-811:1998 5.6.1.1)  
CTW GUIDE 3737  
CAR GUIDE 5000  
THE FEMALE EXTREME MUST BE PLACED UPWARD FOR THE COUNTERWEIGHT GUIDES AND DOWNWARD FOR THE CAR GUIDES  
IS NECESSARY TO CUT 1243 mm  
SOLID BRICKS: HOE PLUGS

**GENERAL CHARACTERISTICS**

REFERENCE CLIENT	OL 2068	REFERENCE WP	AC-68433
MODEL LIFT	SCM-02	SUSPENSION	1:1
NOMINAL LOAD (kg)	630	CAPACITY (N° PERSONS)	8
SPEED (m/s)	1	TRAVEL (mm)	17550
KIND OF REGULATION	3VF	MODEL CAR (COD.)	AUGSBURG
STOPS (N°)	7	LEVELS SERVED (N°)	7
LANDINGS (1)	1	COMPENSATION FACTOR	0.5
TYPE GUIDE CAR T-	90/75/16 Coil	MAX. DIST. FIXATIONS (mm)	1900
TYPE GUIDE COUNTERW. T-	70/65/9 Col.	MAX. DIST. FIXATIONS (mm)	1900
CAR FRAME TYPE	CCSCM-600/D-05	MATERIAL WEIGHT IN COUNT.	FUNDOXIC
COUNTERWEIGHT FRAME TYPE	CCSCM-600/D	N° WEIGHT IN COUNTERWEIGHT.	33
BUFFER	MODEL 300117	BUFFER	MODEL 300422
CAR	QUANTITY 1	CWEIGHT.	QUANTITY 1
ROPE	DIAMETER 10	ROPE TYPE	6x19+1 SEAL
LENGTH ROPES (mm)	26000	RESIST. OF ROPES (N)	53000
MACHINE	MANUFACTURER SASISI	POWER	CV 8
RELATION OF REDUCTION	2/57	MAX. STATIC LOAD (kg)	3000
REVOLUTIONS (turn/min.)	1361	Ø TRACTION PULLEY (mm)	400
STARTS-HOUR	180	Ø DEVIATION PULLEY (mm)	-
POLES	4	BRAKE VOLTAGE (V)	110
FREQUENCY CONTROL	VECTORIAL	MODEL	MICROBASIC
MAINS VOLTAGE	CONTROL VOLTAGE (V)	380	TYPE
	MAX. PROTECTOR (mA)	50	CHARACTERISTICS
			FULL COLLECTIVE

**CALCULATIONS**

PESO		N.		REACCIONES (N)	
CAR	3676	PIT:	R1	16092.9	
FRAME	2928	CAR GUIDES	R2	25982.8	
CAR DOOR	735	CWEIGHT. GUIDE	R2'	4187.6	
WEIGHT CAR	6978	CAR BUFFER	R3	52606	
NOMINAL LOAD	6174	CW. BUFFER	R4	40258	
FULL LOAD	13152	SLAB:			
WEIGHT OF ROPES	459	CAR GUIDES	R5	-	
COMPENSATION CHAIN WEIGHT	0	CWEIGHT. GUIDE	R6	-	
WEIGHT OF COUNTERWEIGHT	10064	BEDFRAME + MACHINE	R7	-	
STATIC LOADING	23676	CAR GUIDE			
BEDFRAME + MACHINE	3479	MAXIMUM REACTIONS ON THE WALLS	S1	1059 N	S1
CAR GUIDE	2941	MAXIMUM REACTIONS ON THE WALLS	S1	449 N	S1
COUNTERWEIGHT GUIDE	1463	MAXIMUM REACTIONS ON THE WALLS	S1	18929 N	S1
		MAXIMUM REACTIONS ON THE WALLS	S1	4581 N	kg

**FITTING OF THE WORKSITE BY THE CUSTOMER**

**SHAFT:** The structure of the shaft must be built according to the national building rules. Wall of the shaft must resist a pressure of 60 N/cm<sup>2</sup> Nominal dimensions according to the drawings. Vertical tolerance from (-0) to (+40 mm). Shaft protection fitted floor levels approved. Lift installation persons only permitted in shaft. The recommended shaft ventilation is 14 or its equivalent section (according to EN 81-1).  
**TOP LEVEL FLOOR:** Easy access, properly ventilated, having adequately electric lighting. Flat side and levelled non slip and dust sealed floor. Controlled temperature between 20°C and 40°C.  
**SHAFT CEILING:** It will have one or several supports or metallic hook with adequate capacity to hang up the hoods (according to 6.3.7. EN 81-1).  
**ELECTRIC SUPPLY:** Including regulatory wiring until the electric closet. The wiring will consist of 3 phases, neutral, earth and a phase for lighting.  
**LANDING LIGHTING:** 50 lux at floor level.  
**EARTHING:** of all the electric installation according the statutory prescriptions in the harmonizing document HD 384-5-54 SI from CENELEC.  
**PIT:** the pit floor must be flat and levelled, protected against water leaching, a means of permanent access to the pit must be taken into account. Pit must be prepared to bare the hoods according to drawings.  
**NOTE:** The project carries out the Directive 89/16/EEC. For detailed rules of local buildings (Town Council - Principado - Regional - Framen) the client is responsible and he will have to control the fulfillment. The present client is developed by means of the localized information and it has covered the technical documents for the construction of our products. The present client is responsible and he will have to control the fulfillment. The present client is developed by means of the localized information and it has covered the technical documents for the construction of our products. The present client is responsible and he will have to control the fulfillment. The present client is developed by means of the localized information and it has covered the technical documents for the construction of our products.

**FOR INSTALLATION**

DATE	NAME	CLIENT	REFERENCE
02/09/02	C.C.A.	WORK SITUATION:	AC-68433
02/09/02	D.C.R.		OL 2068
			REV. 1

**QUANTUM SERVICES**